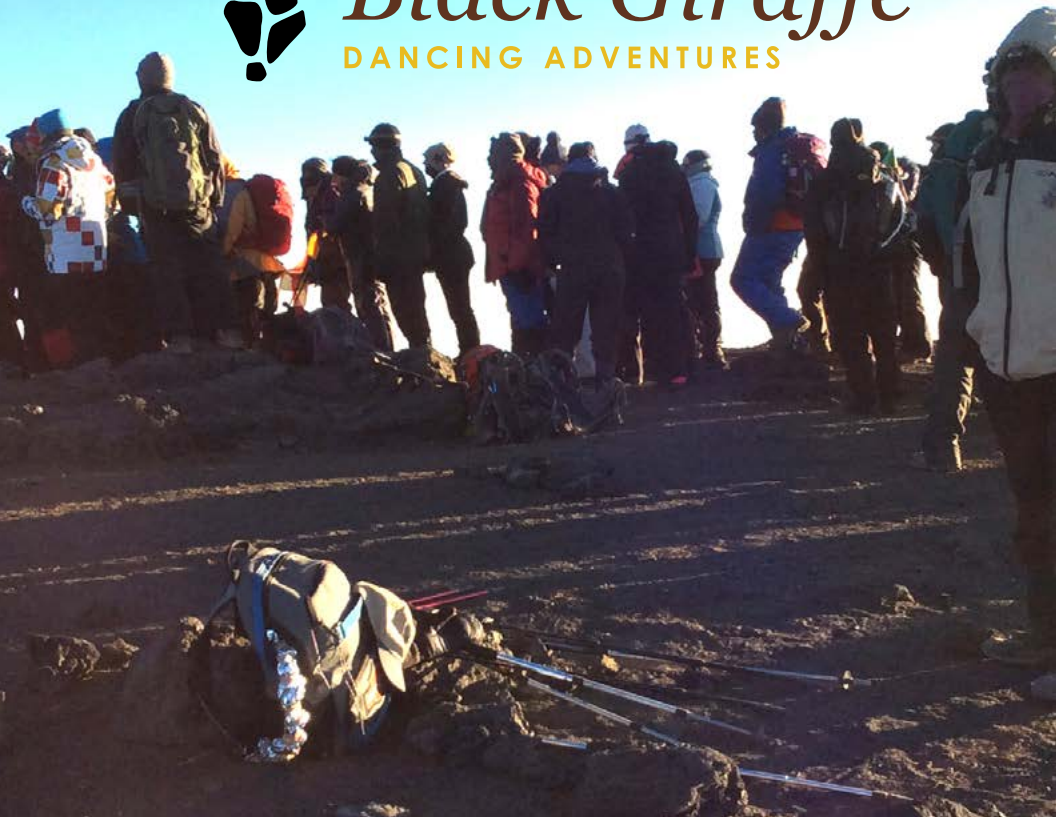




*Black Giraffe*

DANCING ADVENTURES



THE WAITING  
**LINE**  
— AT —  
**CLUB KILI**

**DANCING ON AFRICA'S ROOFTOP**

# DANCING ON AFRICA'S ROOFTOP

December 25, 2017 - January 3, 2018

\$4,589.50\*

*(based on double occupancy)*

\$4,000.00\*

*(based on double occupancy, if no air or hotel needed  
for Los Angeles dance training)*

*Single room supplement \$295.00 (for hotel rooms only)*

*Only two person tents will available for hike  
(single person tents are not permitted)*

## PRICE INCLUDES

Round-trip economy airfare within the U.S. to Los Angeles  
for dance training with Elena Grinenko

Two nights standard room accommodations  
at W Hollywood

Breakfast each morning at W Hollywood  
and group dinner Saturday night December 9

Dance lessons to learn the Mt Kili Cha Cha  
Friday night December 8 and Saturday December 9

Three nights standard room accommodations  
in Arusha at the Kibo Palace

Breakfast/Dinner at Kibo Palace, lunch at Mulala Village  
(December 26) and breakfast/lunch/dinner on the hike

Ground transport to/from Mt. Kilimanjaro gate

Park entrance and camping fees

Tent and mattress *(please bring your own sleeping bag)*

Pre-climb set up with 3 porters per climber

Portable chemical toilet "Potty potty"

Water micro filters

Rescue fees and/or medical evacuation

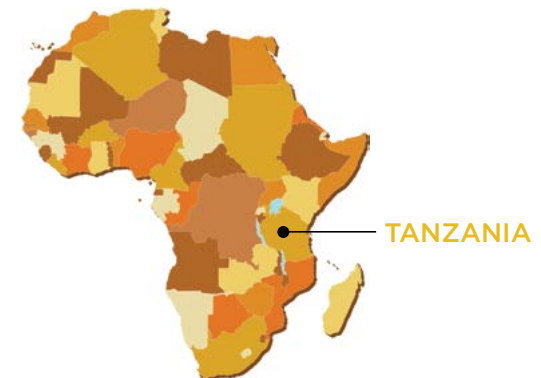
All other government fees

Emergency/supplemental oxygen cylinders with canulars

## PAYMENT

A deposit of \$589.50 is required to hold your space  
with the final payment being due October 1, 2017.

*(Monthly payments are available)*



*\*Not included in price:*

*Airfare to Arusha's Kilimanjaro Airport (BGDA can organize airfare if needed)*

*Gratuities for drivers, guide, cooks and porters*

*Alcoholic drinks and beverages*

*Trip insurance and/or cancellation fees*

*Sleeping bags and personal items*

LET THE DANCE ADVENTURE

**BEGIN!**

DECEMBER 8 - 10, 2017

**DEC 8: Travel to Hollywood, California**

Your adventure starts with a rare opportunity to train with Elena Grinenko and learn the Mt Kili Cha Cha!

6:30 pm LA Ballroom Dance Studio reception

7:00 pm Start training for Mt Kili Cha Cha

9:00 pm End first day Overnight at W Hollywood

**DEC 9: Overnight at W Hotel Hollywood**

11:00 am Continue training-LA Ballroom Dance Studio

12:00 pm Break for lunch

2:00 pm Continue training

3:00 pm Group dance with music and video taping

3:30 pm Return to hotel

6:00 pm Group dinner

**DEC 10:**

Travel home to reconnect on December 25 in Arusha, Tanzania



## ELENA GRINENKO

Dancing with the Stars, World Champion

Choreographer of Mt. Kili Cha Cha

Two-Time World Rhythm Champion and former DWTS Professional, Elena Grinenko, started dancing at the age of seven in her native country of Russia and her passion for dance became a career for life.



At the age of 15, Elena started teaching dance to children, and at the age of 21 immigrated to United States of America, which has been her home ever since.

After retiring from competition, Elena became a coach and choreographer for competitive couples. She is a qualified/certified adjudicator, world-class judge & national judge. Elena is also a choreographer for Olympic medalists in figure skating: Meryl Davis & Charlie White (USA) and Scott Moir & Tessa Virtue (Canada). She is a board member for the National Museum of Dance Hall of Fame and was recently invited to coach and lecture at The Broadway Theater Project.



In addition, Elena was a pro dancer on the hit ABC show, "Dancing with the Stars," for five seasons. Elena also started her own talent agency called Grinya Talent, which specializes in representing dancers, particularly ballroom dancers for film, television, commercials and appearances.



# DANCING ON AFRICA'S ROOFTOP

## DAY 1: DECEMBER 25, 2017

### Arrival

Arrival Kilimanjaro Airport. After clearing customs, you'll be met by Antelope Safaris and Tours and transferred to Arusha.

Overnight at Kibo Palace (FB)

## DAY 2: DECEMBER 26, 2017

### Leisure

A relaxing day visiting Mama Anna and the people at Mulala Village along with the kids at the Osiligi Orphanage.

Overnight at Kibo Palace (FB)

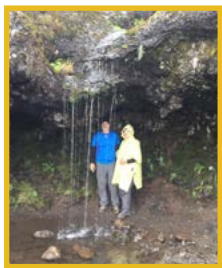
## DAY 3: DECEMBER 27, 2017

### Machame Gate to Machame Hut (9,300')

*0900:* Pick up transfer in coaches from Arusha to Machame gate

*Hike time:* 7.5 hrs, *Elevation change:* +1200 M

*Estimated distance:* 10km, *Final elevation:* 3100 M



The trekking from the gate (5,400') where trekking formalities take about 30 minutes.

You begin the trek following an easy track for the first hour through the dense forest.

The path continues to follow the ridge, rising steadily with several steep sections.

The gradient eases slightly as the forest

merges into heather covered ground we will reach Machame Hut in 10 km (6.2 miles) after a 1,200-meter (3,936') ascent and 5-7 hours of walking.



• Meals and overnight at Machame camp (FB)

## DAY 4: DECEMBER 28, 2017

### Machame Hut to Shira Hut (12,300')

*Hike time:* 7 hrs, *Elevation change:* +800m

*Estimated distance:* 6km, *Final elevation:* 3800m

From the Machame Hut we cross the stream onto its west bank and follow the path up the steep rocky ridge criss-crossing a few times before reaching Shira Hut at the base of a semi-circular wall of rocks. We will have ascended 900 meters (3,000') in 5-7 hours and about 6 km (3.72 miles) of walking.

• Picnic lunch

• Meals and overnight at Shira camp (FB)

**DAY 5: DECEMBER 29, 2017**  
**Shira Hut to Barranco Hut (12,800')**

*Hike time: 5 hrs, Elevation change: +100 M*

*Estimated distance: 5kms, Final elevation: 3950m*

From Shira Hut hike to Lava Tower (15,000') and then proceed to Barranco via the Great Barranco Wall. This route offers panoramic views of Kibo through Karanga Valley as we hike high and sleep low, dropping back down to Barranco after lunch. Today's hike will take most of the day Barranco campsite located on elevation of 3950m.

- Meals and overnight at Barranco camp (FB)



**DAY 6: DECEMBER 30, 2017**  
**Barranco Hut to Karanga Valley (14,800')**

*Hike time: 3.5 hrs, Elevation change: +100 M*

*Estimated distance: 4km, Maximum elevation: 4590 M*

*Final elevation: 4000 M*

From Barranco Hut we climb up through the edge of great Barranco 95 percentage of that day walking will be on elevation of 4250m. We will break our day at Karanga valley campsite at elevation of 4,000m walking time is 4 to 5 hrs on this day.

- Meals and overnight at Karanga campsite (FB)



**DAY 7: DECEMBER 31, 2017**  
**Karanga Valley to Barafu Camp (4,600m)**

*Hike time: 3.5 hrs, Elevation change: +600 M*

*Estimated distance: 4km, Final elevation: 4600 M*

Today involves gaining a little more elevation, acclimatizing and resting for the summit attempt the next morning. This day will take us 4 to 6 hrs of walking.

- Meals and overnight at Barafu camp (FB)



## DAY 8: JANUARY 1, 2018

### Barafu Hut to the Summit and then Mweka Camp (10,500)

**SUMMIT DAY! Possible world record attempt at 8am**  
**(Please note a minimum of 10 participants is required).**

*Summit time: 7 hrs, Elevation change: +1300m*

*Estimated distance: 5km, Final elevation: 5895m*

*Descent time: 5 hrs, Elevation change: -2800m*

*Estimated distance: 12km, Final elevation: 3100m*

We will start trekking at approximately midnight as the walk today will take 10-14 + hours. We will avoid the mist that sets in later in the day; the scree and snow will still be safely frozen. The 1,100-meter (3,600') ascent in just over 3 km (1.86 miles) will take us about 6-8 hours. After a brief stay at the summit of the highest point in Africa, Uhuru Peak, at over 5,898 meters (19,340'), we descend via the Barafu route roughly 2,500 meters (8,200') in 12 km (7.44 miles) in about 4-7 hours to Mweka Camp.



## DAY 9: JANUARY 2, 2018

### Mweka Hut to Mweka Gate (6,000')

*Descent time: 4 hrs, Elevation change: -1250M*

*Estimated distance: 10km, Final elevation: 1828 M*

Today we descend about 1400 meters (4,592') through the forest on a jungle path for about 10 km (6.2 miles) in 3-4 hours to reach Mweka Gate. Then transfer to Arusha where you'll overnight at the Kibo Palace.

## DAY 10: JANUARY 3, 2018

### Departure Day

*Depending on flight time, morning at leisure with an early afternoon transfer to Kilimanjaro Airport.*



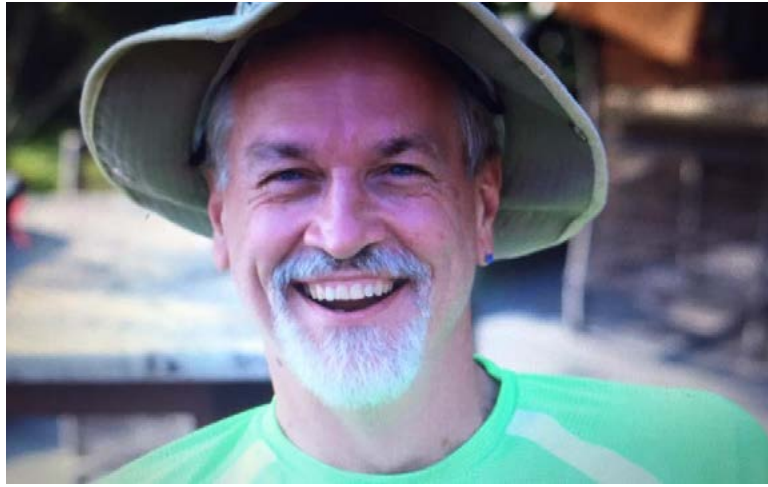
OFFICIAL ATTEMPT

Ask about our **Guinness World Records™** attempt for the "Highest Altitude Group Dance on Land" atop Africa's Rooftop, Mt. Kilimanjaro and how you can participate.\*

*\*Please note, there is a minimum group size of 10 participants and a maximum of 50. Approximate time of 7:30-8:30am*

# BLACK GIRAFFE DANCING ADVENTURES

*Brian Chapman, Owner*



## TRAVEL INFORMATION

*For Tanzania*

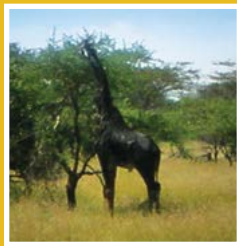
While there are no mandatory vaccinations for entering Tanzania, travelers will be required to have a yellow fever vaccination if there is a stop of more than five hours at any country that has a risk of the disease. It is wise to consult a travel medical practitioner for information specific to Tanzania.

The currency of Tanzania is the shilling (Tshs). The USD (U.S. Dollar) is easily exchanged in large towns, hotels and lodges and sometimes even preferred. All USD bills need to be 2006 or newer. Standard chartered banks around the country have ATM machines that will allow travelers to withdraw cash. Cash and only major credit cards are generally accepted at hotels and lodges.

A tourist visa for Tanzania is required and all passports are required to have at least 6 months of validity (preferably one year) from the start date of travel.

Insurance is not required, but highly recommended. All Black Giraffe Dancing Adventures (BGDA) itineraries are organized in accordance with Tanzanian laws.

When packing, it is best to take casual and comfortable clothing. Jackets or sweaters may be needed for early morning or late afternoon game drives. Sunscreen, insect repellent and travel adapters are also advised.



*Black Giraffe Dancing Adventures*

*brian@blackgiraffeadventures.com*

4340 E. Indian School Road, Suite 21501

Phoenix, Arizona 85018



**(602) 321-5540**

**www.BlackGiraffeAdventures.com**

**www.facebook.com/blackgiraffedancingadventures**